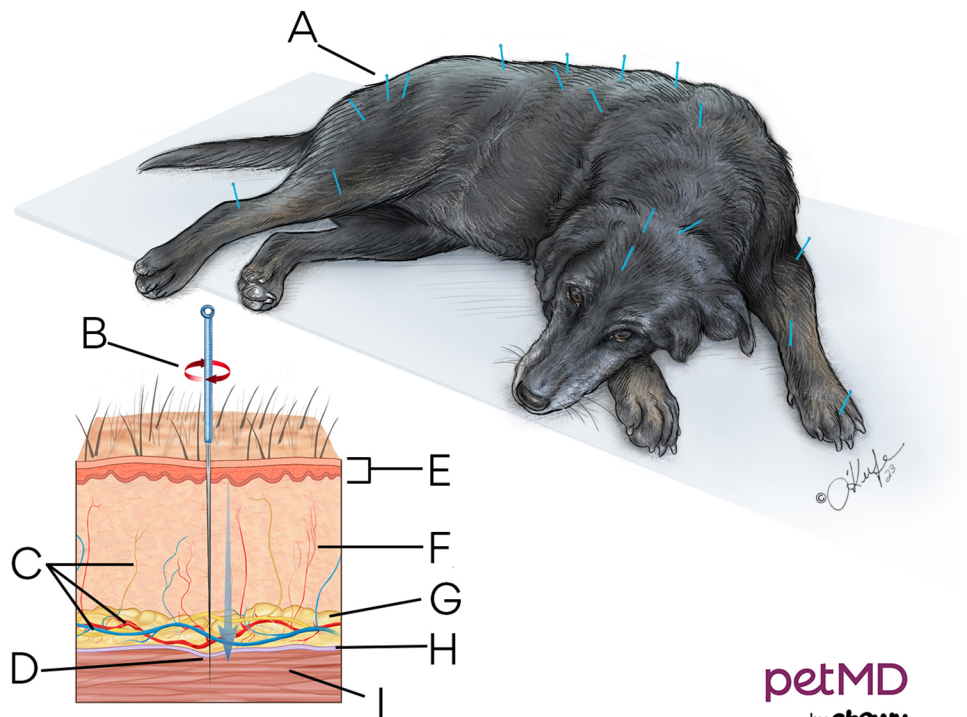


## Acupuncture in Dogs



petMD  
by chewy

- A.** Needles placed along body, limbs, and head
- B.** Needle is rotated
- C.** Nerves and vessels
- D.** Acupuncture needle inserted through skin at various depths where nerves are located (dermis) or deeper into muscle.
- E.** Epidermis
- F.** Dermis
- G.** Fat
- H.** Fascia
- I.** Muscle