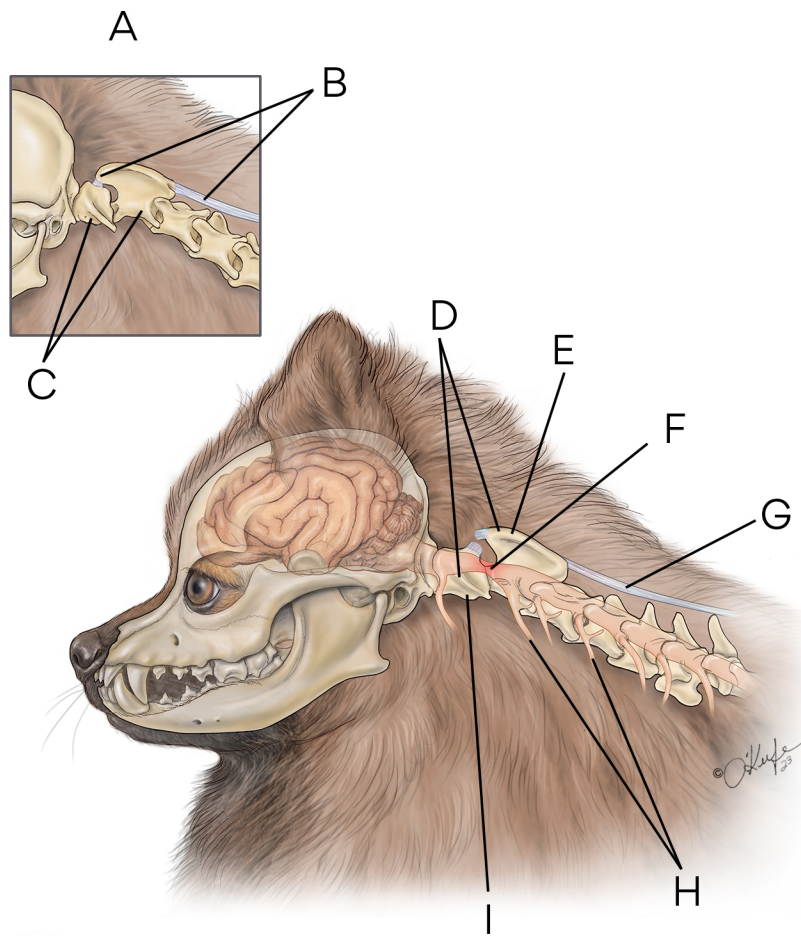


Atlantoaxial Instability in Dogs



- A.** Normal anatomy **B.** Ligaments **C.** C1 and C2 vertebrae normal alignment **D.** Vertebrae out of alignment (C1 and C2)
E. Subluxation of axis C2 (deviation of axis causes injury and compression of spinal cord) **F.** Compression of spinal cord
G. Ligament **H.** Spinal nerves **I.** Atlas C1