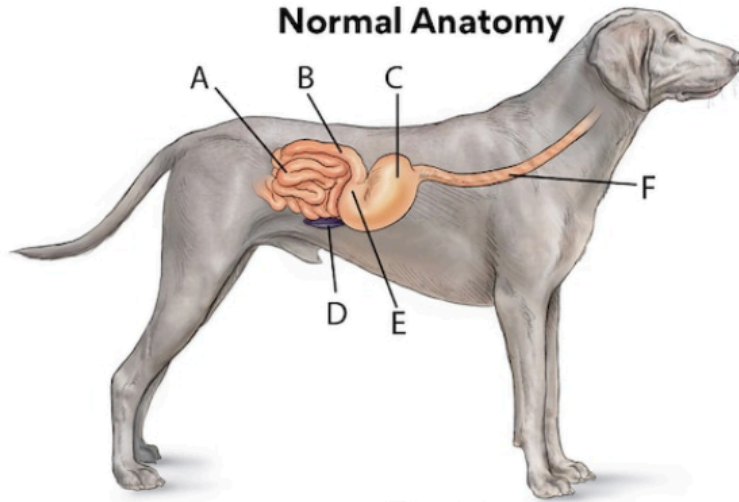


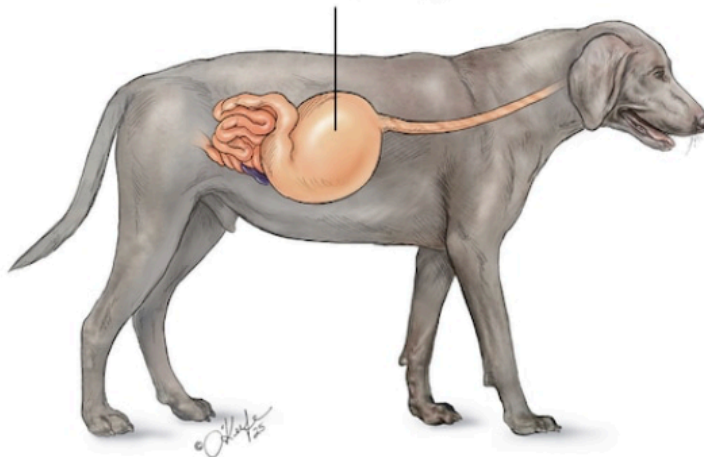
# Bloat in Dogs/GDV in Dogs

## Normal Anatomy



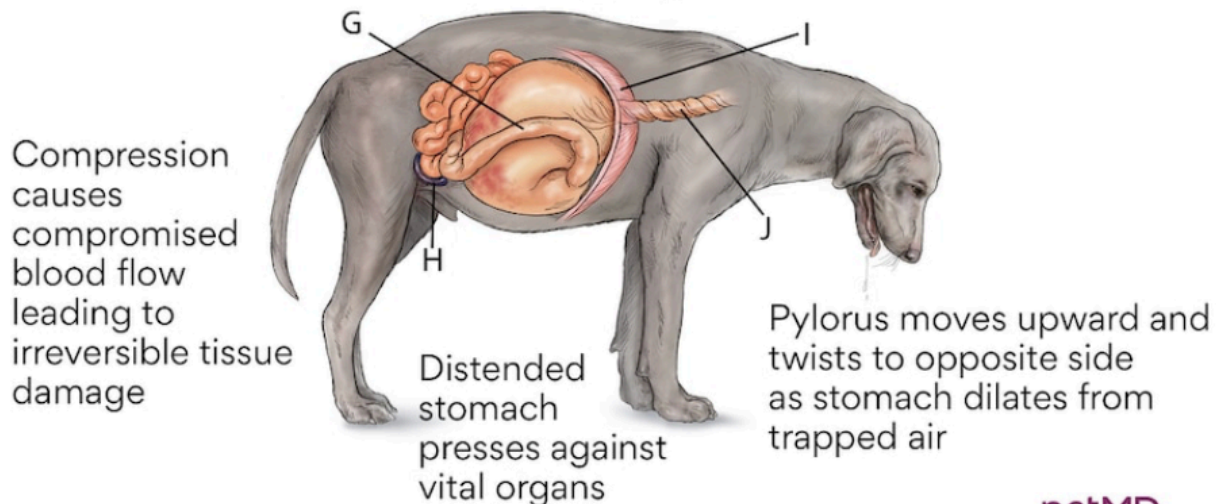
## Bloat

Stomach becomes distended from build up of gas and fluid



## GDV

Bloat build up causes stomach to stretch and twist (clockwise 90-360 degrees) and can cause blockage to blood supply, spleen and stomach



petMD  
by chewy

- A.** Jejunum    **B.** Duodenum    **C.** Stomach    **D.** Spleen    **E.** Pylorus  
**F.** Esophagus    **G.** Duodenum    **H.** Spleen    **I.** Diaphragm  
**J.** Esophagus twists