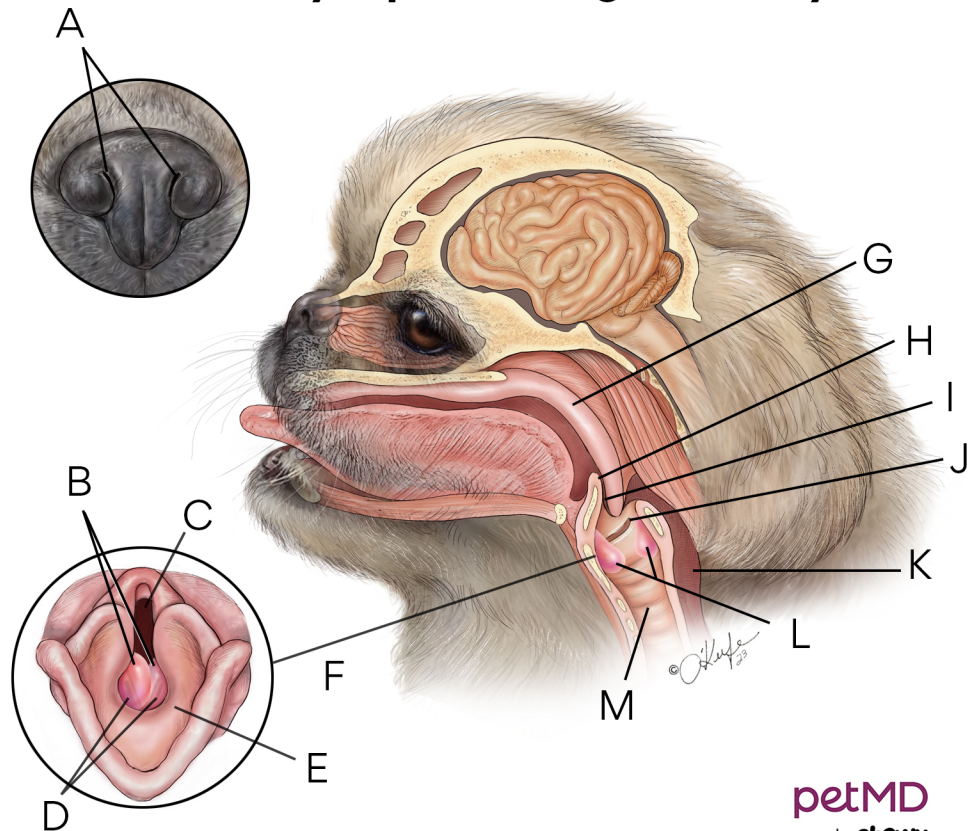


Brachycephalic Dog Anatomy



petMD
by chewy

- A.** Narrow nostrils restrict air flow **B.** Enlarged laryngeal saccules **C.** Airway **D.** Vocal cords (ghosted beneath saccules) **E.** Epiglottis **F.** Top view showing saccules blocking airway **G.** Elongated soft palate **H.** Epiglottis **I.** Restricted airway **J.** Laryngeal ventricle **K.** Esophagus **L.** Enlarged sacs **M.** Narrow trachea