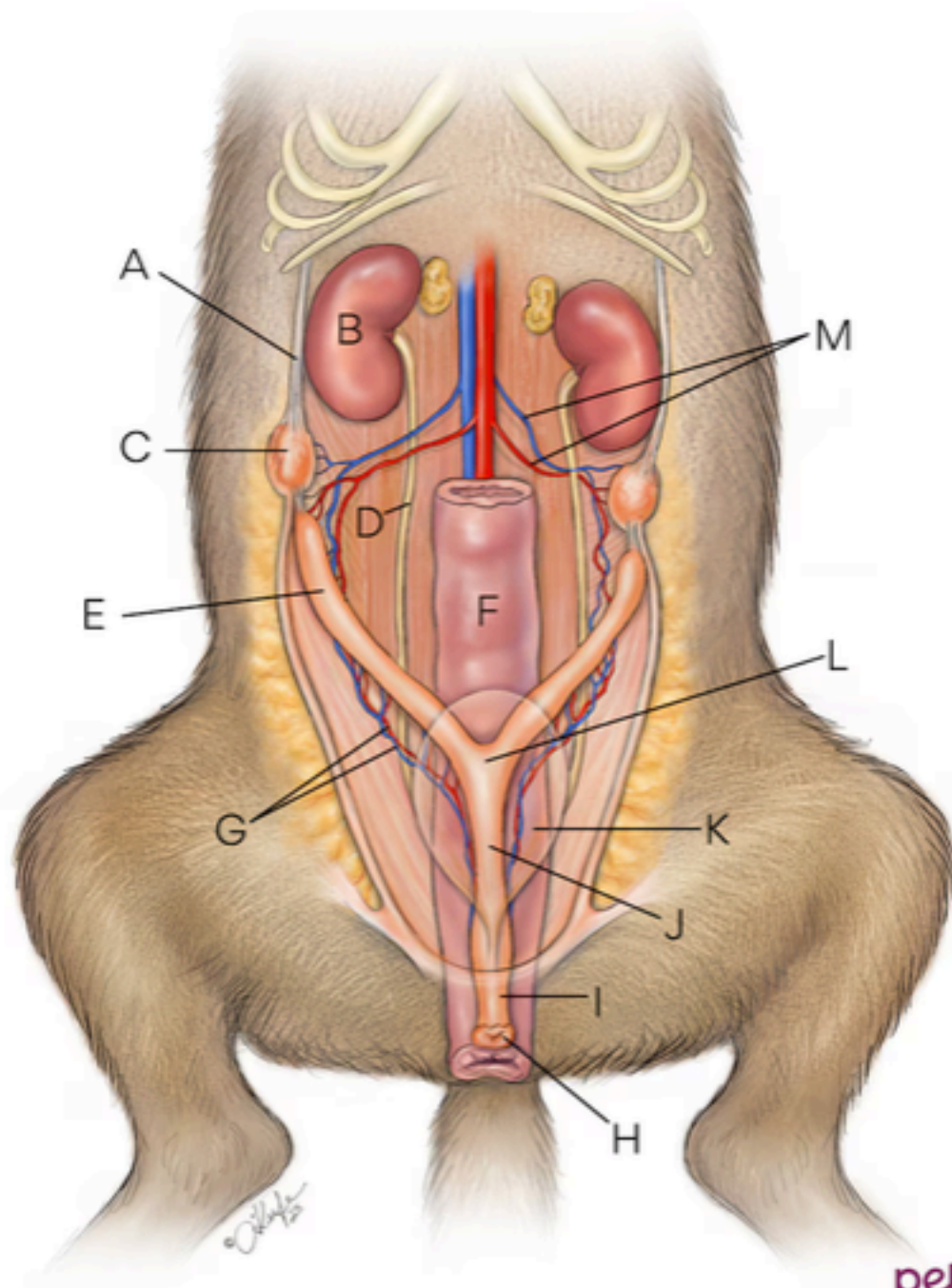


Female Reproductive System in Dogs



petMD
by chewy

- A.** Suspensory ligament **B.** Kidney **C.** Ovary **D.** Ureter
E. Uterine horn **F.** Colon **G.** Uterine artery and vein **H.** Vulva
I. Vagina **J.** Cervix **K.** Bladder **L.** Uterine body **M.** Ovarian artery and vein