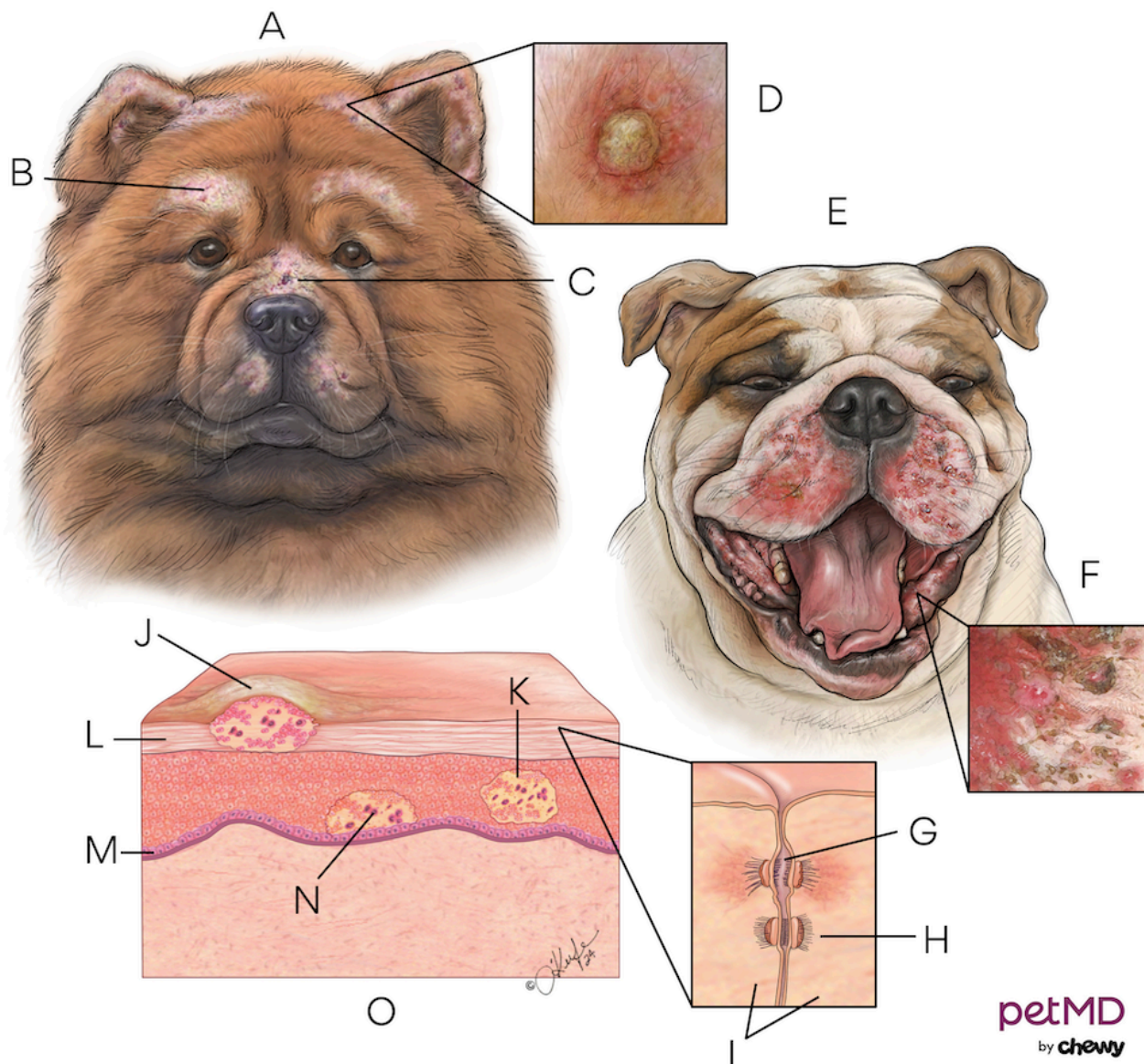


Pemphigus in Dogs



petMD
by chewy

- A.** *P. foliaceus*-symmetrical distribution of lesions with scaling, hair loss, and pustules on head, face and ears
- B.** Scaling
- C.** Hair loss
- D.** Pustules can also form on foot pads and body trunk
- E.** *P. vulgaris*
- F.** Erosions and ulcerations affect mucosal epithelium on mouth, lips, genitals, anus, foot pads, and claw beds
- G.** Cell to cell adhesion breaks down
- H.** Desmosome forms junction between cells
- I.** Cells
- J.** *P. foliaceus*-pustules on surface of skin
- K.** *P. vegetans* (rare) forms wart like growths
- L.** Stratum corneum
- M.** Basal layer
- N.** *P. vulgaris*-vesicles (fluidfilled blisters) affect deeper layers of skin
- O.** Location of different pemphigus diseases within the epidermis