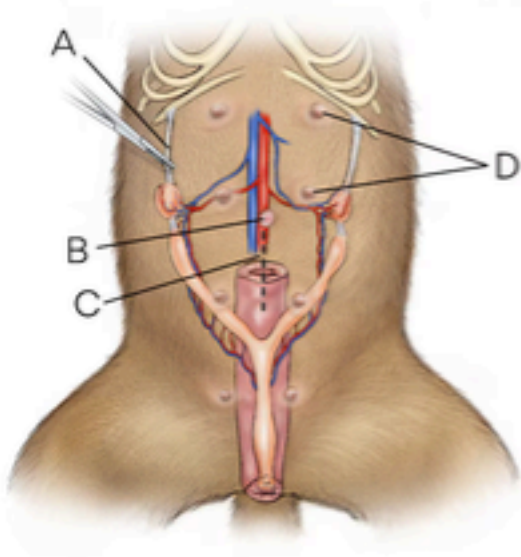
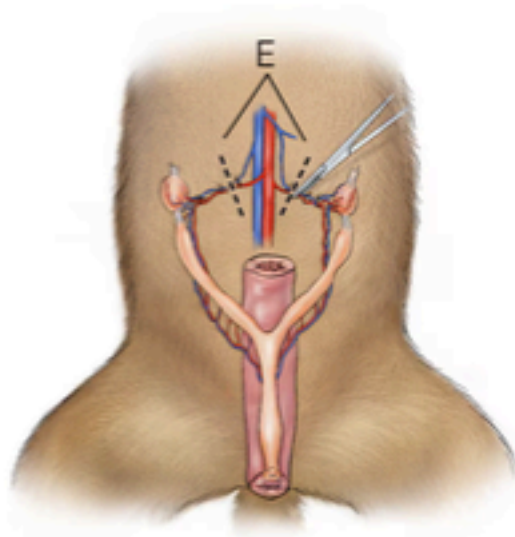


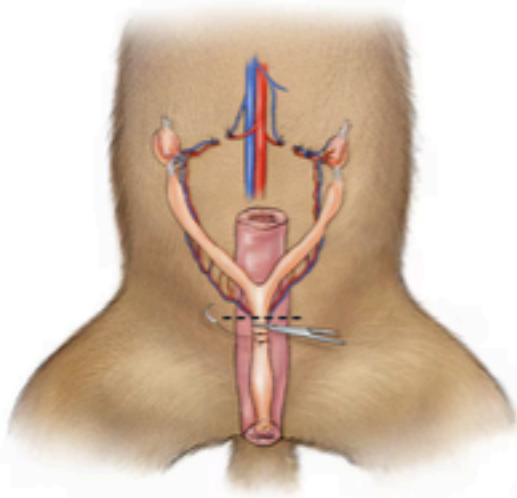
Spay Surgery



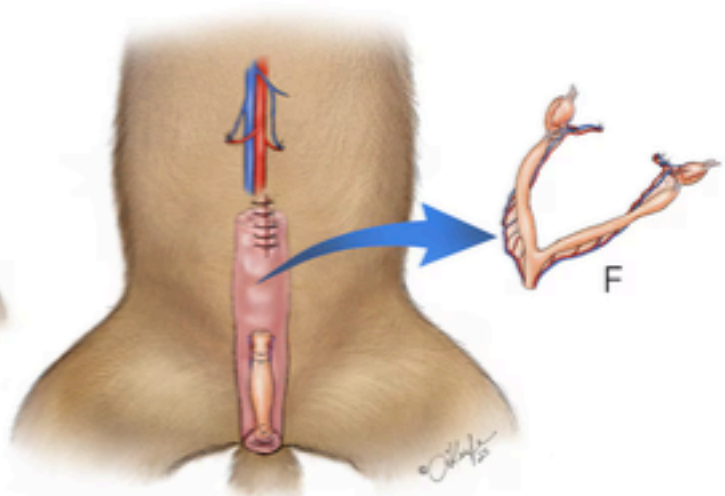
1. Incision through skin layers and body wall



2. Isolate uterus and ovaries



3. Blood supply and uterine tissue is tied off (ligated) before it is cut away



4. Close abdomen

A. Ligament broken **B.** Umbilicus
E. Ovarian pedicles ligated and cut

C. Incision **D.** Mammary glands
F. Ovaries and uterus removed