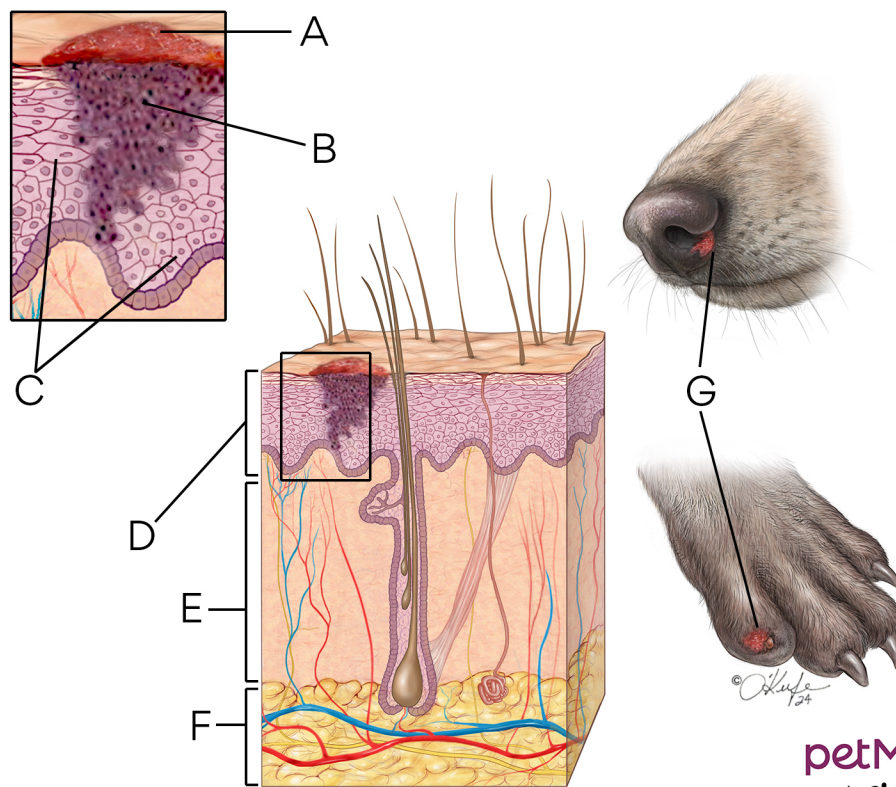


## Squamous Cell Carcinoma in Dogs



- A.** Lesion on surface of skin    **B.** Abnormal squamous cells  
**C.** Normal squamous cells    **D.** Epidermis    **E.** Dermis  
**F.** Subcutis    **G.** Red, irritated and/or ulcerated solitary lesions  
are commonly seen on the nose or toes.