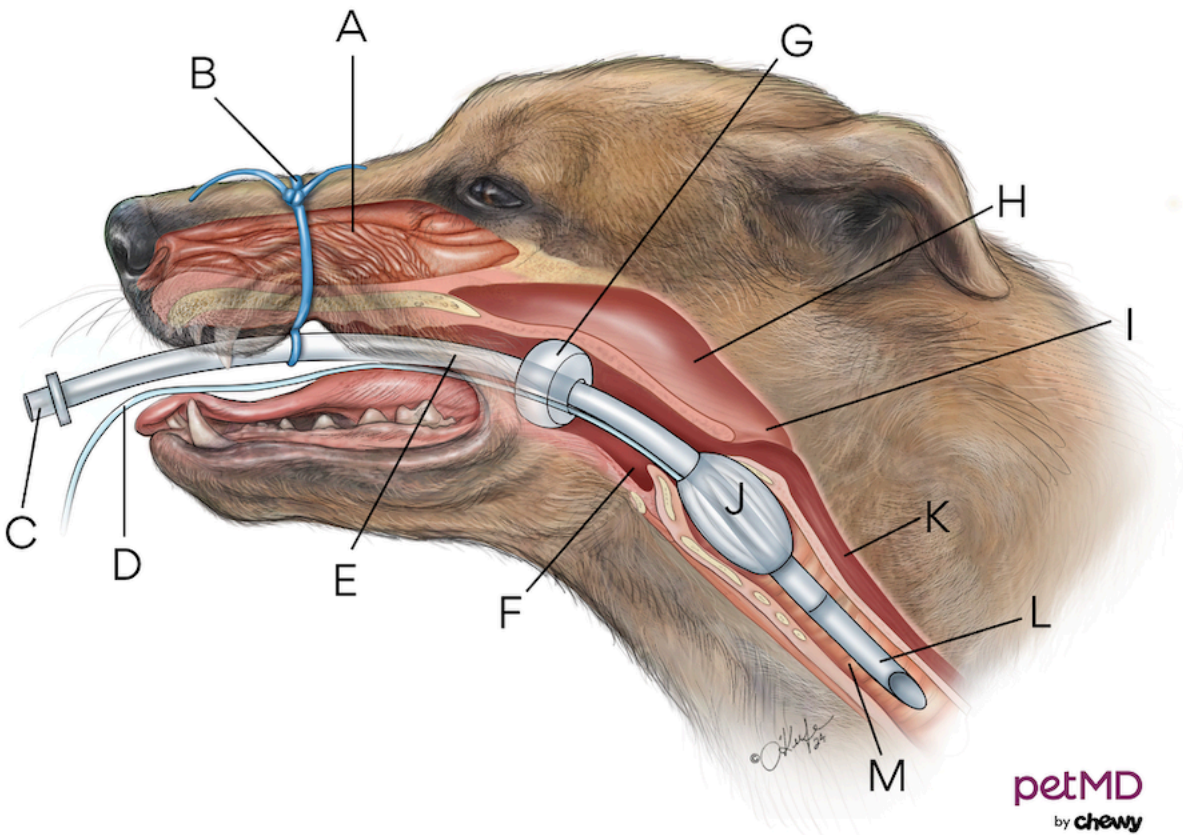


Endotracheal Tube for Dogs



- A.** Nasal cavity
- B.** Securing loop
- C.** Connecting port
- D.** Cuff inflating tube
- E.** Endotracheal tube
- F.** Oropharynx
- G.** Aspir-Guard prevents aspiration during procedure

- H.** Nasopharynx
- I.** Laryngopharynx
- J.** Cuff
- K.** Esophagus
- L.** End of endotracheal tube
- M.** Trachea