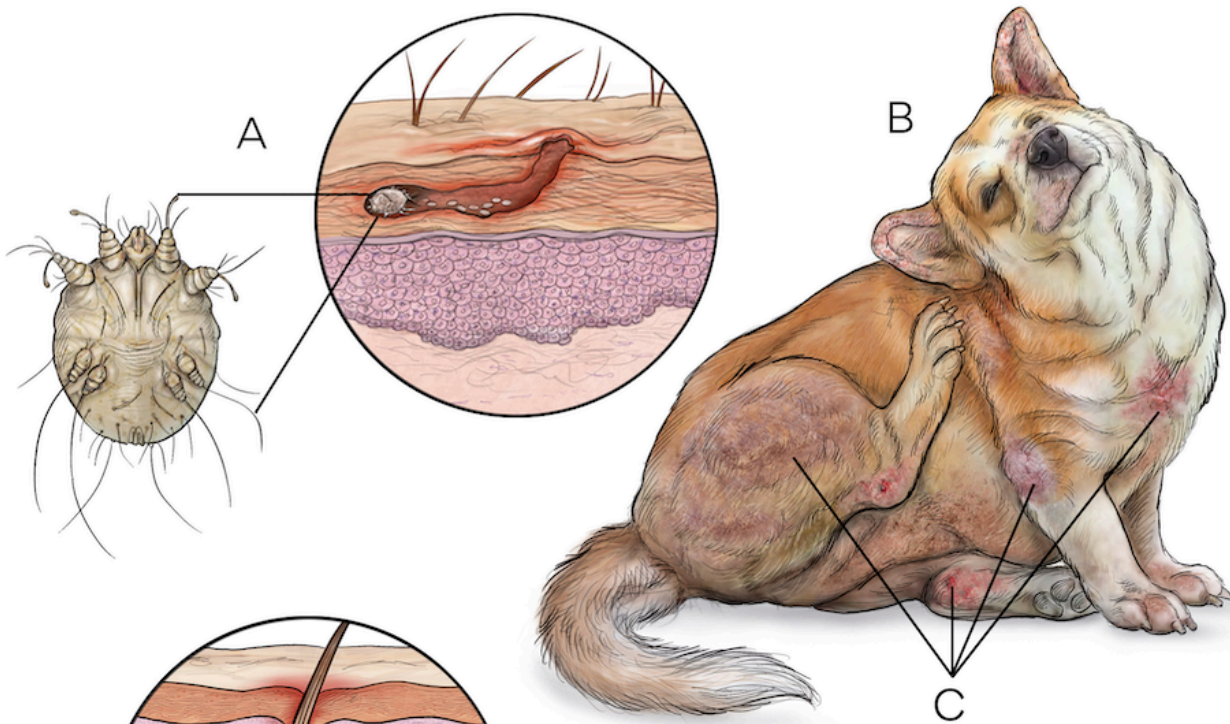
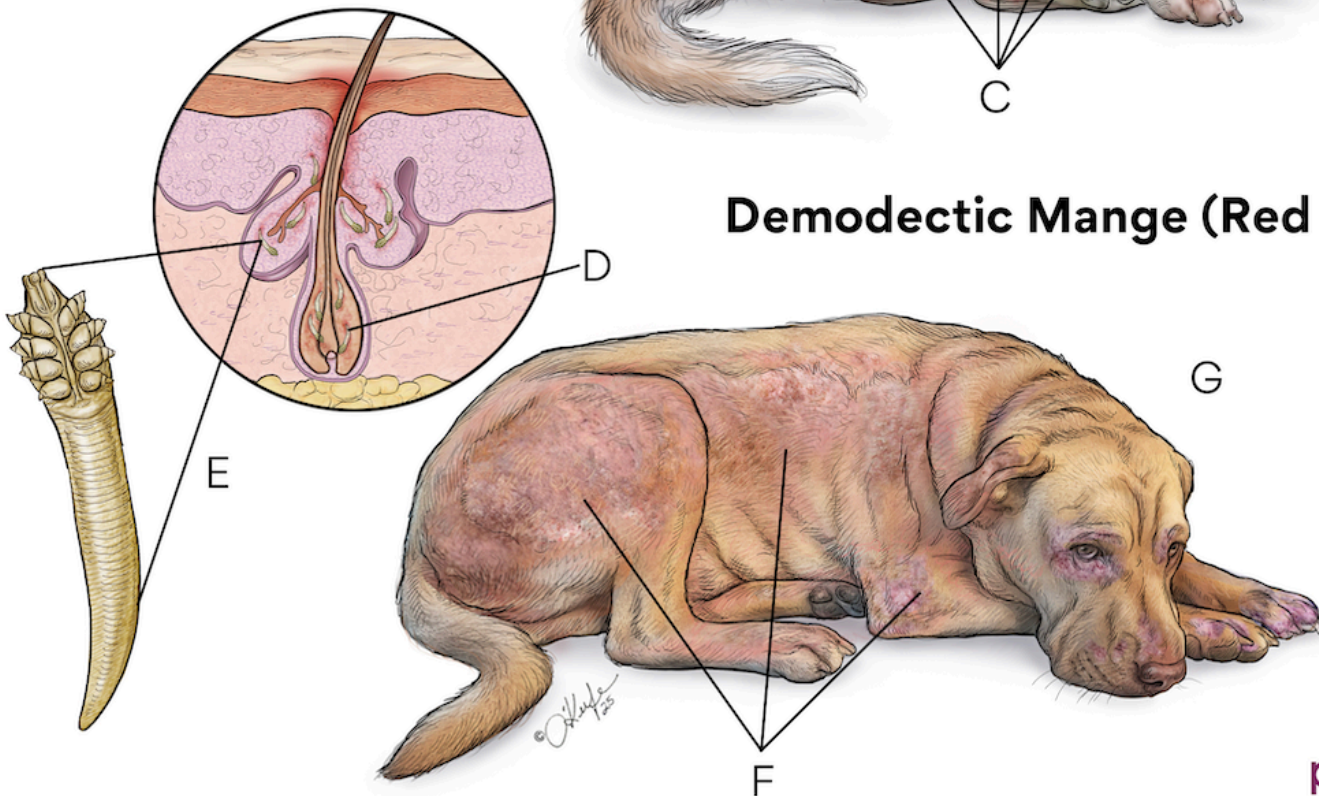


## Sarcoptic Mange (Scabies)



## Demodectic Mange (Red Mange)



- A.** Mite burrows into skin, lays eggs in tunnel networks
- B.** Sarcoptes, which are highly contagious and very itchy
- C.** Hair loss (alopecia), skin lesions, thick crusted skin, raised bumps on chest
- D.** Mites reside in hair follicles and glands of skin
- E.** As mites burrow in, they push waste behind them and clog follicles
- F.** Red, scaling lesions, hairless inflamed areas, and bumps on skin
- G.** Demodex, which are not contagious and variably itchy